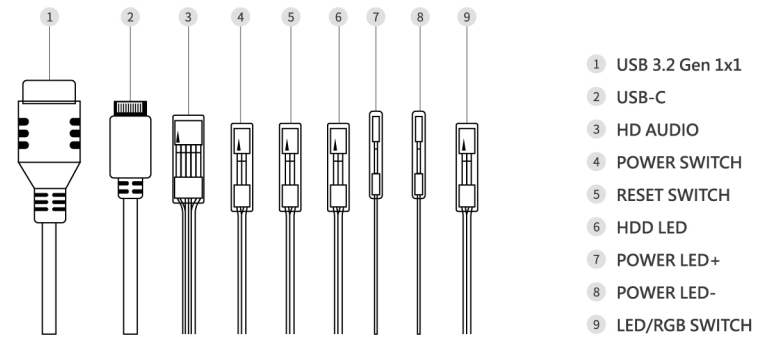
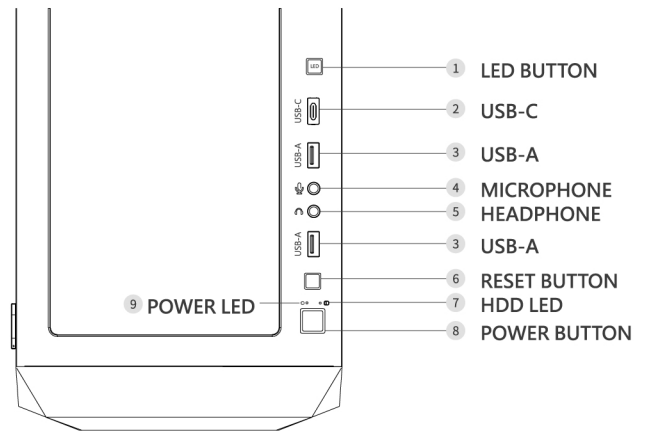


LGPOWER™
GAMING 804B OBSESSION_X

SPECIFICATION

Model	Gaming 804B Obsession_X	
Dimensions	Structure dimensions:	430 x 205 x 470 mm
	Case dimensions:	470 x 205 x 485 mm
Motherboard	E-ATX / ATX / Micro-ATX / ITX	
PCIe Slots	7x horizontal + 2x vertical	
Drive Space	2x 3,5" + 2x 2,5" or 3x 3,5" + 1x 2,5"	
I/O ports	2x USB-A, 1x USB-C (USB 3.2 Gen 1x1), HD Audio	
Fan mounting options	Front:	3x 120/140 mm Next to mainboard: 2x 120 mm
	Top:	3x 120/140 mm Back: 1x 120 mm
	PSU shroud:	3x 120 mm
Liquid cooling mounting options	Front:	120/140/240/280/360 mm
	Top:	120/140/240/280/360 mm
	Next to mainboard:	120/240 mm
Max. GPU length	420 mm	
Max. CPU height	160 mm	
Max. PSU length	200 mm	
Fans included in delivery	3x 140 mm + 1x 120 mm ARGB case fans (mainboard- or remote controlled)	

I/O PORTS



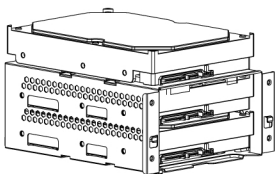
Please refer to the motherboard installation manual to connect these cables.

SCREWS

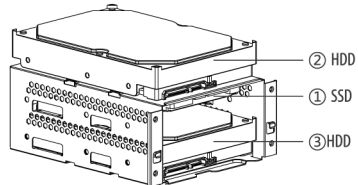
	For mainboard installation	6 pcs
	For power supply / graphic card installation	10 pcs
	For mainboard and 2,5" SSD installation	30 pcs
	For 3,5" HDD installation	12 pcs

DRIVE FRAME

HDD mounting example

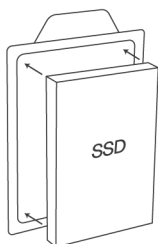


HDD + SSD mounting example



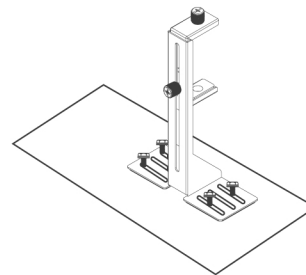
1. Take out the drive frame from below the PSU shroud.
2. Please use the correct screws to mount an HDD or an SSD.
3. If you need to mount both an HDD and an SSD as shown in the right example, the installation sequence is ① SSD, ② HDD and ③ HDD.

SSD FRAME

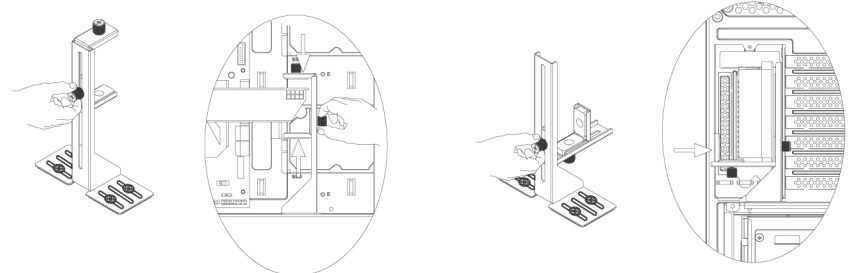


1. Take out the SSD frame behind the motherboard.
2. Use the correct screws to mount the SSD onto the frame.
3. Mount the SSD frame to its original position.

GPU HOLDER



1. Use four screws to mount the graphic card holder onto the PSU shroud.



2. Adjust the GPU holder to a matching distance according to the thickness of the graphic card, then tighten the screws to make sure the graphic card is fixed and can't move.