



LC-POWER

ATX Gaming 982B - Redeemer -



Case type:
 Motherboard:
 Drive bays 3.5" external:
 Drive bays 5.25" external:
 Drive bays 5.25" internal:
 Drive bays 3.5" internal:
 Drive bays 2.5" internal:
 PCI slots:
 Case fan standard/maximal:
 Case dimensions h x w x d:
 Graphic cards up to:
 CPU cooler up to:

Midi-Tower
 ATX, Micro-ATX, Mini-ITX
 -
 2
 -
 3
 4
 7 (screwable)
 1/4 - Front: 2x 120 mm
 Lateral: 1x 120/140 mm
 Back: 1x 80/92/120 mm
 435 x 215 x 455 mm (total)
 415 x 185 x 400 mm (cage)
 340 mm
 155 mm

Audio port: HD Audio
 USB 3.0 port: 1
 USB 2.0 port: 2
 Case material: metal
 Mark of conformity: CE
 Case colour: black
 Front panel: black mirror finish look
 Power supply integrated: -
 Weight: 5,00 kg (retail)
 4,06 kg (case)
 Barcode: 4260070125232
 Manufacturer code: LC-982B-ON



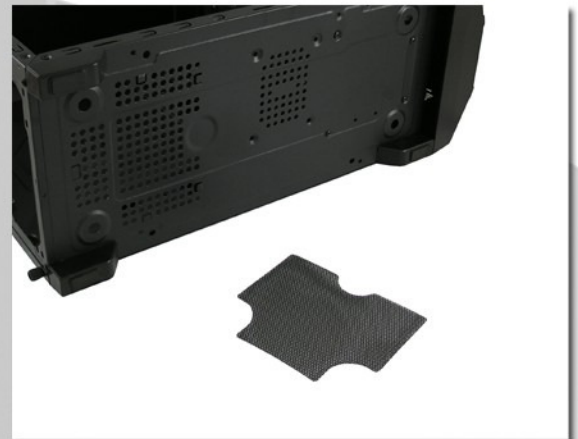
- removable mounting frame for 2,5" HDDs/SSDs to mount in graphic cards up to 340 m



- incl. one blue lighted 120 mm case fan (up to four case fans mountable)



- I/O-Panel with: 1x USB 3.0 port, 2x USB 2.0 port, HD Audio



- removable dust filter below the PSU location

Characteristics:

- mainboard tray for cable management
- tool-free mounting of all 5,25" ODDs
- black coating of the case inside
- openings for a water cooling system
- incl. one 120 mm case fan (blue lighted)
- up to four case fans mountable (further fans optionally available)
- PSU mountable on bottom of the case rear; dust filter below the PSU location
- easy demounting of the dust filter
- side panel with acrylic window

Note:

- USB 3.0 - internal mainboard connector