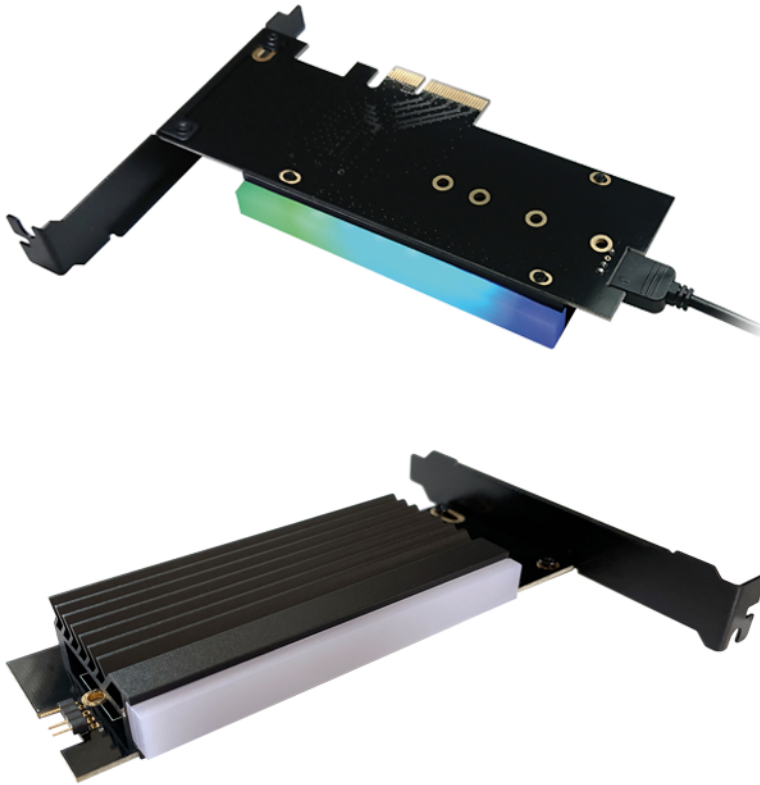


## LC-PCI-M2-NVME-ARGB

PCI controller for a M.2 NVME SSD with heatsink and ARGB lighting



- adapter for a M.2 NVME SSD (PCIe 4.0 x4)
- incl. heatsink to avoid overheating and throttling
- ARGB lighting, controllable via mainboard software
- for a NVMe M.2 SSD:
  - NVMe M.2 SSD - M-Key
  - NVMe M.2 SSD - B+M-Key
- SSD type: 80/60/42/30 x 22 mm M.2
- suitable for PCIe connectors: 4x/x8/x16
- incl. high and low profile brackets (12/8 cm) and thermal pads

### Technical specification - LC-PCI-M2-NVME-ARGB

Suitable to:	NVMe-M.2-SSD - M-Key NVMe-M.2-SSD - B+M-Key
SSD type:	80/60/42/30 x 22 mm M.2
Internal interface:	PCIe x4/x8/x16
Data transfer rate:	up to 64 Gb/s
Dimension (product):	22 x 120 x 150 mm
Dimension (retail):	30 x 150 x 175 mm
Weight (product/overall):	0,176 / 0,250 kg
Material:	aluminium alloy, glas fiber sheet, plastic
Colour:	black
OS:	Windows 10
Mark of conformity:	CE
Barcode:	4260070128769
Manufacturer code:	LC-PCI-M2-NVME-ARGB

Included in delivery:	1x PCI card 1x heatsink 1x high profile bracket 1x low profile bracket 4x thermal pad 1x ARGB cable 1x mounting material 1x user manual
-----------------------	--

