



LC-CF-PRO-RGB-COMBO

Installation instruction Control via remote control

Step 1 - PSU connection:

Connect the SATA PSU cable with the SATA receiver cable.



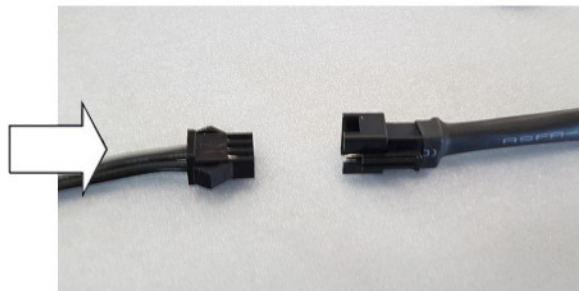
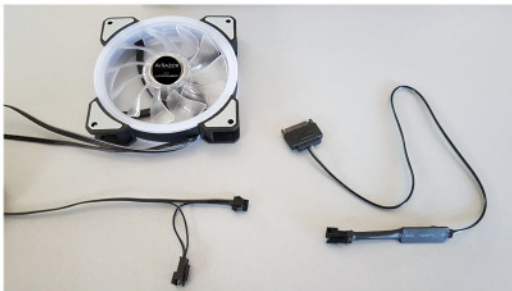
PSU



Receiver cable

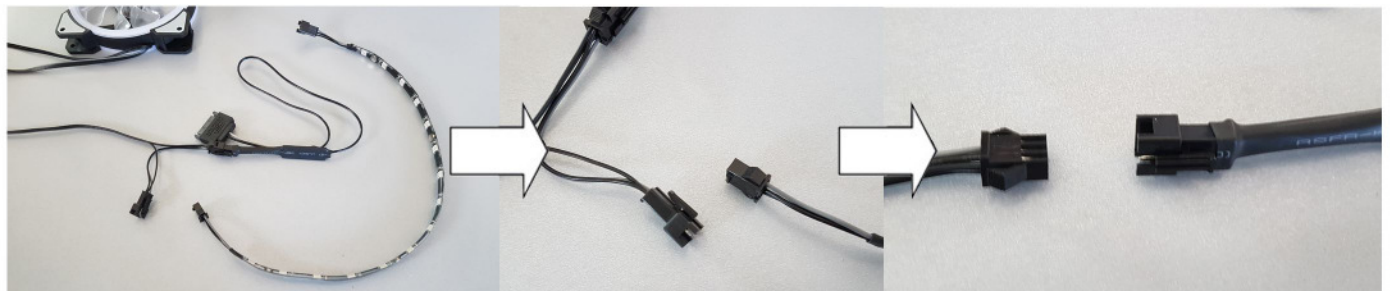
Step 2 - Receiver cable connection:

Connect the 3 pin receiver cable to the 3 pin fan cable.



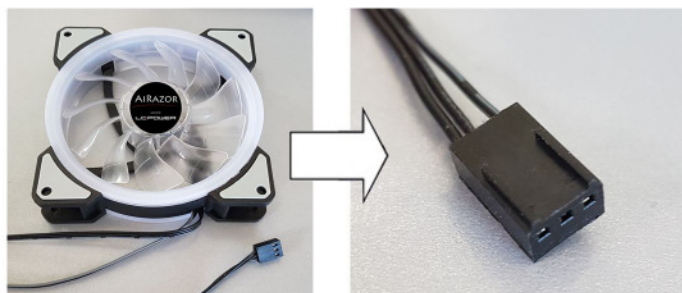
Step 3 - LED stripe and fan connection:

Connect the 3 pin fan cable with the 3 pin LED stripe cable or another 3 pin fan cable.
Repeat this step to connect multiple LED stripes and fans in a row.



Step 4 - Mainboard connection:

Connect the 3 pin fan cable to the mainboard.
Consult your mainboard manual to locate the position of the 3 pin fan connector on your mainboard.



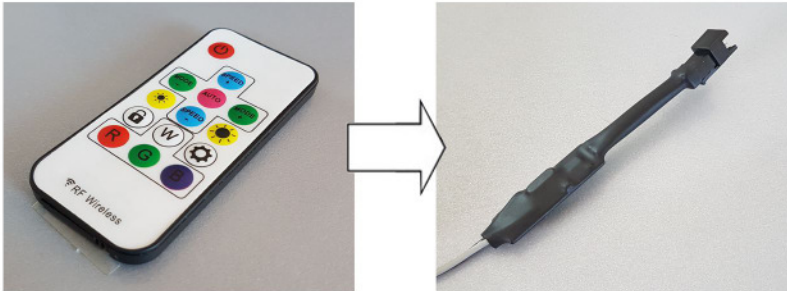


LC-CF-PRO-RGB-COMBO

Installation instruction Control via remote control

Step 5 - Controlling:

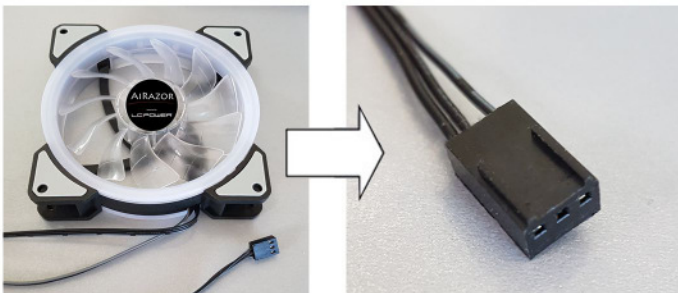
Press the "Power" button. Point the remote control at the sensor to operate it.



Mainboard controlling

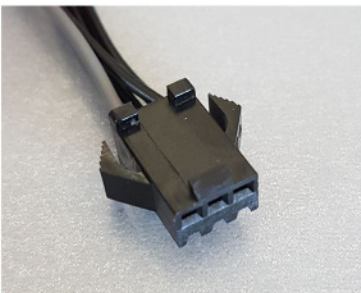
Step 1 - Mainboard connection:

Connect the 3 pin fan cable to the mainboard.
Consult your mainboard manual to locate the position of the 3 pin fan connector on your mainboard.



Step 2 - Mainboard RGB cable connection:

Connect the 3 pin RGB fan cable with the mainboard.
Consult your mainboard manual to locate the position of the RGB connector on your mainboard.
Additional LED stripes and fans can be connected in a row as explained on page 1, step 3.
Colours and modes can be controlled via the mainboard's RGB software.



Note:
Some mainboards need this digital RGB adapter cable which must be connected between the 3 pin RGB fan cable and the mainboard itself.

